

FOLLOW THAT... COFFEE

*An intermodal adventure
with a delicious ending!*



PART I

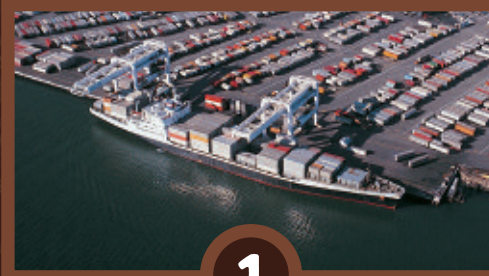
Compliments of:

CAGTC

Coalition for America's
Gateways & Trade Corridors

www.tradecorridors.org

**Departure Point:
SANTOS PORT IN SAO PAULO, BRAZIL**

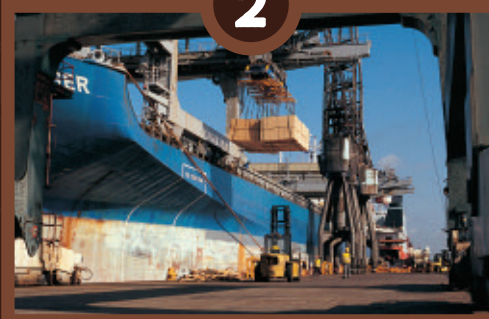


1

Containers of coffee beans are loaded
onto SHIPS for United States delivery.



2



U.S. Port Facility

3



The coffee beans are picked up by TRUCK.

4



Then transferred to RAIL.

5



U.S. Distribution Center

**Final Destination:
STARBUCKS® CAFE - WASHINGTON, DC**



6

The beans are again picked up by TRUCK
and brought to local cafes, coffee houses
and supermarkets, like those on Capitol Hill.

**Intermodal freight infrastructure
and goods movement must be
adequately funded through the
transportation reauthorization bill!**

Don't Forget Freight!



Have a cup of coffee and
remember the essential and
multi-modal freight transportation
system that brought it!

7

FOLLOW THAT... CORN

*An intermodal adventure
with a tasty ending!*



PART II

Compliments of:

CAGTC

Coalition for America's
Gateways & Trade Corridors
www.tradecorridors.org

**Departure Point:
CORN FARM IN THE MIDWEST**



1



The harvested corn is transported to
the farm's processing plant.

2



The corn is picked up by TRUCK and
brought to a rail facility.

3



The corn is then carried by RAIL.

4



U.S. Port Facility

5



The corn is exported by SHIP.

**Final Destination:
JAPAN**



6

The corn is offloaded and distributed
to product manufacturing plants
throughout the country.

.....
**Intermodal freight infrastructure
and goods movement must be
adequately funded through the
transportation reauthorization bill!**
.....

Don't Forget Freight!

Let's not be corny, but if
you got it, our essential
and multi-modal
freight transportation
system brought it!

7



FOLLOW THAT... CRAYON

*An intermodal adventure
with a colorful ending!*



PART III

Compliments of:

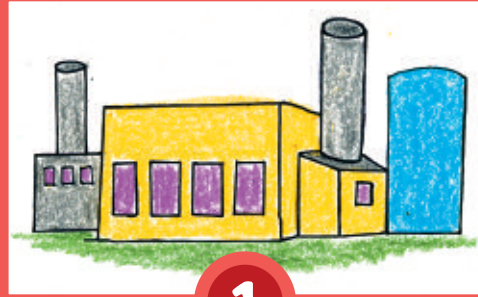
CAGTC

Coalition for America's
Gateways & Trade Corridors

www.tradecorridors.org

Telephone: (202) 828-9100

Departure Point: RAW MATERIALS PLANT

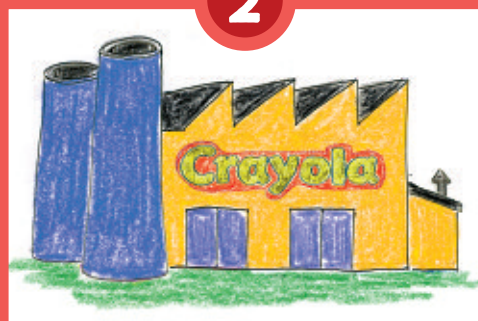


1



The raw materials are transported by RAIL
to the Crayola® manufacturing factory.

2



3



The boxes of crayons are picked up
by TRUCK.

4



U.S. Port Facility

5



The boxes of Crayons are exported by SHIP.

Final Destination: ENGLAND



6

The crayons are offloaded and distributed
to retail stores throughout the country.

**Intermodal freight infrastructure
and goods movement must be
adequately funded through the
transportation reauthorization bill!**

Don't Forget Freight!

**Do we have to draw
you a picture?**

If you got it,
our essential and
multi-modal freight
transportation system
brought it!

Crayons provided by
Binney & Smith,
owners of the Crayola brand.

7



FOLLOW THAT... COTTON

*An intermodal adventure
with a fluffy ending!*



PART IV

Compliments of:

CAGTC

Coalition for America's
Gateways & Trade Corridors

www.tradecorridors.org

Telephone: (202) 828-9100

Departure Point: COTTON FARM



1



The cotton is sent through the
gin and baled.

2



The bales of cotton are picked by TRUCK
and brought to a rail-accessible warehouse.

3



The cotton is carried from the
warehouse by RAIL.

4



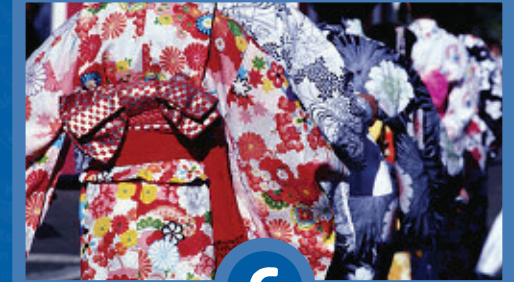
U.S. Port Facility

5



The cotton is exported by SHIP.

Final Destination: JAPAN



6

The cotton is offloaded and distributed
to product manufacturing plants throughout
the country where a variety of goods are
made, like kimonos.

.....
**Intermodal freight infrastructure
and goods movement must be
adequately funded through the
transportation reauthorization bill!**
.....

Don't Forget Freight!

Clean out your ears and listen:

Our essential and multi-modal
freight transportation system
needs at least \$2 billion
per year!

7

*Cotton products
provided by CVS/pharmacy.*



FOLLOW THOSE... ALTOIDS®

*An intermodal
adventure with a curiously
refreshing ending!*



PART V

Compliments of:

CAGTC

Coalition for America's
Gateways & Trade Corridors
www.tradecorridors.org

Telephone: (202) 828-9100

**Departure Point:
MANUFACTURING PLANT – ENGLAND**



1



2



The Altoids® are exported by SHIP.

3



U.S. Port Facility

4



The Altoids® are carried by RAIL.

5



**The Altoids® are picked by TRUCK and
brought to distribution warehouses.**

**Final Destination:
WASHINGTON, DC**



6

**The Altoids® are again picked up by
TRUCK and brought to local convenience
stores and supermarkets, like those on
Capitol Hill.**

**Intermodal freight infrastructure
and goods movement must be
adequately funded through the
transportation reauthorization bill**

Don't Forget Freight!

**Put your money where your
mouth is...**

**Refresh America's essential
and multi-modal freight
transportation system with
at least \$2 billion per year!**

7



FOLLOW THAT... RICE

*An intermodal adventure
with a grainy ending!*



PART VI

Compliments of:

CAGTC

Coalition for America's
Gateways & Trade Corridors
www.tradecorridors.org

Telephone: (202) 828-9100

Departure Point: RICE FARM - UNITED STATES



1



2



The rice is picked by **TRUCK** and brought
to a rail-accessible warehouse.



3

The rice is then carried from the
warehouse by **RAIL**.



4

U.S. Port Facility



5

The rice is exported by **SHIP**.

Final Destination: JAPAN



6

The bags of rice are offloaded and
distributed throughout the country
where it is consumed.

.....
**Intermodal freight infrastructure
and goods movement must be
adequately funded through the
transportation reauthorization bill!**
.....

Don't Forget Freight!

From Washington DC's Chinatown
to San Francisco's Rice-a-Roni®,
America's freight transportation
system feeds us coast-to-coast
and needs at least
\$2 billion per year!

7



FOLLOW THAT... SHARPIE®

*An intermodal adventure
with a permanently
marked ending!*



PART VII

Compliments of:

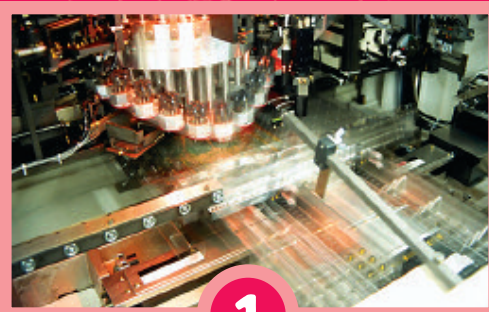
CAGTC

Coalition for America's
Gateways & Trade Corridors

www.tradecorridors.org

Telephone: (202) 828-9100

Departure Point: PRODUCTION FACTORY



1



The Sharpies® are picked by TRUCK.

2



The Sharpies® are carried by RAIL.

3



U.S. Port Facility

4



The Sharpies® are exported by SHIP.

5



The Sharpies® are picked by TRUCK and
brought to distribution warehouses.

Final Destination: AUSTRALIA



6

The Sharpies® are sent to distribution
centers throughout the country.

**Intermodal freight infrastructure
and goods movement must be
adequately funded through the
transportation reauthorization bill!**

Don't Forget Freight!

Write this down:

"I will support at least
\$2 billion annually to
fund our essential and
multi-modal freight
transportation system!"

7



FOLLOW THAT... TEA

*An intermodal adventure
with tea-riffic ending!*



PART VIII

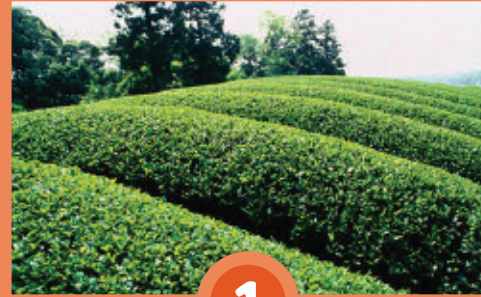
Compliments of:

CAGTC

Coalition for America's
Gateways & Trade Corridors
www.tradecorridors.org

Telephone: (202) 828-9100

**Departure Point:
PORT OF COLOMBO - SRI LANKA**



1

The tea is then carried from the port by RAIL.



3

**Final Destination:
WASHINGTON, DC**



6

The tea is again picked up by TRUCK
from the distribution centers and brought
to local cafes, coffee houses and
supermarkets, like those on Capitol Hill.

**Intermodal freight infrastructure
and goods movement must be
adequately funded through the
transportation reauthorization bill!**

Don't Forget Freight!

Regardless of how you like
your TEA, "SAFE or LU",
leave room for at least
\$2 billion per year to
improve America's
essential and multi-
modal freight
transportation
system!

7



Containers of tea are loaded onto
SHIPS for United States delivery.

2

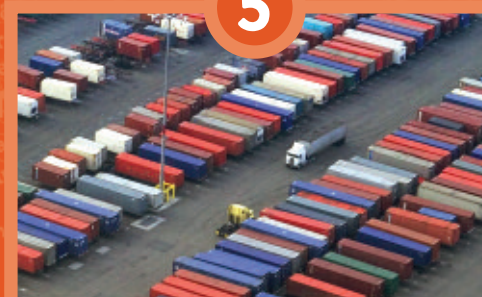


U.S. Port Facility



The tea is picked by TRUCK and brought
to distribution centers.

4



U.S. Distribution Center

5